



Probiotics that protect

# RESTROOM 24/7 CAPS

## Probiotic Restroom Cleaner & Odor Neutralizer

- **CAPS In-bottle dilution** for cleaning-on-the-go
- Removes **staining and mineral deposits**
- Helps establish a natural **protective shield on surfaces**
- **Cleans** on a microscopic level using healthy bacteria
- Continues to work for up to **14 days after application**
- Rapid and effective **odor control**
- **Ecological** product certified by the Ecologo
- 100% natural **micro-organisms**
- **Safe** to use, **no PPE** needed
- Biotechnological product, based on natural ingredients



Product information:



PRODUCT CERTIFIED FOR  
REDUCED ENVIRONMENTAL IMPACT.  
VIEW SPECIFIC ATTRIBUTES EVALUATED:  
UL.COM/EL UL 2759





Probiotics  
that protect



# RESTROOM 24/7 CAPS

## Probiotic Restroom Cleaner and Odor Neutralizer

### DESCRIPTION

Concentrated, probiotic-based descaling cleaner for restrooms: toilets, showers, sinks, floors, etc. Creates a safer environment by establishing a natural, protective shield. Using PoLVita Restroom 24/7 as a daily cleaner ensures effective and continuous cleaning and optimal odor control. Fresh minty fragrance.

### SPRAY BOTTLE FILLING

1. Rinse the spray bottle before each refill
2. Fill the spray with cold or temperate water. Do not fill to the top. Leave enough volume for the concentrate in the CAPS to mix
3. Screw the CAPS on the spray bottle until you hear a SNAP! Mix by up-ending the bottle a few times
4. Remove the CAPS and screw on the spray trigger
5. After use, dispose of the empty CAPS according to local recycling guidelines

### USE

Spray on the surface to be cleaned. Allow to stand and then wipe with a damp microfiber cloth or sponge. Allow to dry. For safety reasons, it is recommended to apply the product to switches and outlets using a paper towel or microfiber cloth. **DO NOT SPRAY ON SWITCHES DIRECTLY.**

### DOSAGE

Use one CAPS per quart bottle (32 oz.)

### TECHNICAL CHARACTERISTICS

- Color: pink
- Fragrance: peppermint
- pH: 4,2 ± 0,5
- pH in solution: 4,9 ± 0,5

### STORAGE AND CONSERVATION

- Store the product in its original sealed packaging. Do not allow to freeze.
- Shelf life for use of the diluted version: 2 weeks under normal storage conditions.
- Shelf life for the concentrated version: 24 months under normal storage conditions.
- A slight deposit may appear.

### ECOLOGICAL INFORMATION

- Biodegradable product (EC 648/2004)
- Ecologo certified
- Packaging 100% recyclable
- CO<sub>2</sub> neutral production and transportation from Belgium to your warehouse
- 100% wastewater treatment
- Production based on 100% renewable energy (solar, thermal or hydroelectric)

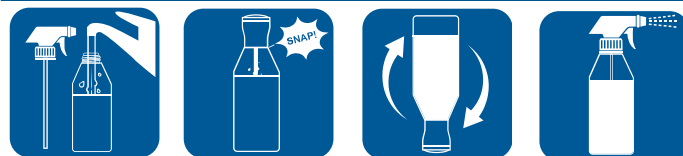
### SOCIAL RESPONSIBILITY

Contributes to a concrete sustainable development project (via CO2Logic).

### PACKAGING

PACKAGING	ITEM N#
<b>ECONO PACK:</b> 200 CAPS (loose)	GEN986
<b>MASTER PACK:</b> 40/5 CAPS Cartridges	GEN1024
<b>STARTER PACK:</b> 4/5-CAPS Cartridges + 4 Bottles & Triggers	GEN5024

#### SPRAY BOTTLE DILUTION



Fill Quart Bottle > Twist CAPS On > Invert to Mix > Attach Trigger

#### MOP BUCKET DILUTION (1 CAPS/gal)



Fill Bucket > Hold Activator Above Bucket > Twist CAPS On (3X)